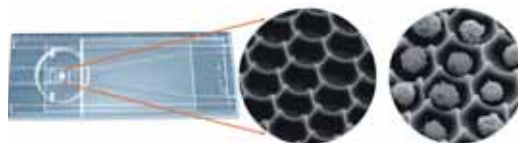




« The Thermo Scientific Cell Growth and Discovery (CGD) WorkCell

» The NUNC LiveCell Array microscope slide from Thermo Fisher Scientific



Finding Nano

Look at what you've discovered

Children are often said to have more imagination than adults. But after seeing the level of elegant detail and lively color in the imaging technology currently available, it is almost as if imagination is not required for the research scientist. Almost.

Alpha Innotech has unveiled its latest gel imaging system, the **Alphamager EP**. This system can acquire high-resolution images of fluorescent gels, SDS-PAGE gels, and colony plates. The Alphamager EP is equipped with a high performance, motorized CCD camera, and a robust light cabinet with a dual wavelength UV transilluminator, white light table, and multi-position filter wheel. Captured images are processed and analyzed with AlphaView, the next generation analysis software. **More information:** www.alphainnotech.com

VersaDoc MP imaging systems, from **Bio-Rad**, are highly quantitative, flexible instruments that allow you to image a wide range of multiplexed samples, including 1-D and 2-D gels, chemiluminescent blots, and microplates and autoradiograms. The systems use highly uniform F-mount lenses for minimum optical distortion, and exceptionally uniform illumination for accurate quantitation across the entire imaging platen. Two models are available: the **VersaDoc MP 4000** system offers state-of-the-art mega resolution, and the **VersaDoc MP 5000** system is recommended for state-of-the-art super sensitivity. Each VersaDoc MP imaging system provides high-energy red, green, and blue excitation for greater sensitivity, application-driven software control, excellent sensitivity and resolution, patented flat fielding technology, highly

uniform data (CV** < 5%), data security, and full integration with Quantity One 1-D analysis software and PDQuest 2-D analysis software CFR modules. **More information:** www.bio-rad.com

CellASIC introduces the **ONIX** microfluidic platform for live cell imaging of yeast samples. This represents the first and only product on the market that allows continuous cell culture imaging with flow switching control. The ONIX can be used with any inverted microscope to provide superior flow control, image clarity, and time lapse tracking of yeast cells. The pioneering microfluidic design enables control of nanoliter flow rates (25 nL/min to 200 nL/min) and solution switching with timescales of under 10 seconds. CellASIC's breakthrough technology provides crystal clear fluorescence images by holding yeast cells in perfect focus through restricting cells to a 4.5 micron tall elastic chamber. This method keeps the cells (even budding cells) in a fixed position during time lapse imaging without hindering solution exchange, allowing single experiments to be followed for up to five days. **More information:** www.cellasic.com

Fujifilm has announced the release of its most advanced fluorescence and chemiluminescence image analysis system yet. The **LAS-4000** has the highest sensitivity and resolution to date with the most user friendly design. It is also Fuji's first

LAS model for *in vivo* imaging. In addition to all the applicable reagents usable by the former LAS instruments, the LAS-4000 is also equipped for infrared reagents along with expanded UV capabilities. The upgraded cooled CCD camera gives a virtual image of up to 6.3 megapixels, twice the resolution of previous LAS models and is now upgraded to USB 2.0 ports for faster data transfer speeds. **More information:** www.fujifilm.com

JENOPTIK offers a complete **macrophotography system for ProgRes cameras**. The new image documentation system is easy to operate and captures images of superior quality. Equipped with a high quality macro zoom objective lens, the system records objects from 6 x 4 mm² to 40 x 30 cm², producing fully sized pictures, and exceeding even stereo microscopes in terms of the image field size. Its working distance ranges from 14 cm to 90 cm with a zoom ratio of 6:1. Ergonomic manual levers are provided for precision alignment of the objective lens. The stand consists of an extremely low-vibration guiding column with a manual friction drive and weight compensation. Its robust base plate of 45 x 50 cm² is adequately sized to accommodate greater photographic objects, too. The macro workstation may be combined with any ProgRes camera model. **More information:** www.jenoptik.com

The **NUNC LiveCell Array** from **Thermo**

» The PALM MicroBeam laser microdissection system by Carl Zeiss



Fisher Scientific, is the first microscope slide-based high content analysis (HCA) tool that enables multi-parametric, imaging-based assays on thousands of intact individual cells, including non-adhering blood and bone marrow cells. Scientists may observe each cell at its own identified location and track its individual, real-time responses to intervention. The disposable NUNC LiveCell Array microscope slide contains an embedded, transparent array of pico-wells available in sizes of 15, 20, 100 or 250 microns in diameter. Individual cells settle into the pico-wells by means of gravity, and are not displaced by rinsing or staining. Kits that include reagents, buffers and protocols for assays involving apoptosis or CD3, CD4 and CD8 cell surface markers are also available. **More information: www.nuncbrand.com**

The **Thermo Scientific Cell Growth and Discovery (CGD) WorkCell**, from **Thermo Fisher Scientific**, is a fully enclosed, environmentally controlled automation solution for high capacity cell growth, supply and in-line image analysis. Combining software and sophisticated robotics, the CGD WorkCell can simultaneously handle multiple plate/flask formats and perform cell maintenance, colony selection and RNAi studies. The CGD WorkCell can significantly improve the quantity and quality of characterized cells, eliminating human error and improving data consistency. This high capacity system offers full level II HEPA containment with strategic ports for easy user access while still protecting cells from contamination, and users from potentially hazardous aerosols and vapors. Importantly, the CGD WorkCell can perform a wide variety of assays at the optimal point of cell growth and has extensive process

flexibility. With the ability to accommodate multiple container formats, the CGD WorkCell can provide cells suitable for a variety of research needs, from cloning and transfection studies, to general cell line amplification in one system. **More information: www.thermo.com**

Carl Zeiss introduces the **PALM MicroBeam** laser microdissection system, the only instrument capable of simultaneous visualization and microdissection under multichannel fluorescence illumination and extended focus. Built upon the Zeiss Axio Observer research grade inverted microscope, the PALM MicroBeam employs PALM's exclusive LPC (laser pressure catapulting) technology for contamination-free specimen acquisition. The PALM Robo-Software may be used to generate single or multichannel images for up to five different wavelengths while the Axio Observer's high performance filters enable up to 70% higher excitation intensities and allow the use of phase contrast and differential interference contrast (DIC) illumination. Higher excitation intensity also allows the PALM MicroBeam to reduce exposure times by up to 50%, to protect fragile living cells. **More information: www.carlzeiss.com**

Nanozoomer, from **Olympus**, allows pathologists and researchers to digitally scan slides for analysis, publication or archiving. Automatically scan up to 210 slides at 20x or 40x using three (3) 4096 x 64 pixel Time Delay and Integration (TDI) CCD imaging sensors at high-speeds for reduced photobleaching. Users scan and archive slides at high resolution without degradation of image quality, and compare the fluores-



» The Applied Precision personalDV system from Image Solutions

cence image with other samples. **More information: www.olympusamerica.com**

Image Solutions announces the **personalDV** system to provide high-resolution fixed and live-cell imaging in a single, integrated bench top design. Designed by Applied Precision, the personalDV also has an excellent data storage and management system. Applied Precision's proprietary illumination design features a Xenon light source to provide over 1,000 hours of continuous illumination for the long-term studies required in live-cell imaging. Combined with a newly designed 10 position excitation filter wheel and 6-position emission filter wheel, the personalDV is a complete system. **More information: www.imsol.co.uk** ■

Companies Mentioned in this Product Spotlight:

Alpha Innotech - www.alphainnotech.com

Bio-Rad - www.bio-rad.com

Carl Zeiss - www.carlzeiss.com

CellASIC - www.cellasic.com

Fujifilm - www.fujifilm.com

Image Solutions - www.imsol.co.uk

Jenoptik - www.jenoptik.com

NUNC - www.nuncbrand.com

Olympus - www.olympusamerica.com

Thermo Scientific - www.thermo.com

KENYON
HOAG
ASSOCIATES

Your Expert in Marketing to the World of Science.
www.kenyonhoag.com

These pages were compiled and written by Kenyon Hoag Associates. The contents have not been reviewed by the editorial staff of The Scientist. Submit press releases for consideration to: spotlight@the-scientist.com